


## 8-BLADE FAN

Technical Specifications					
Fan Diameter	8 ft.	12 ft.	16 ft.	20 ft.	24 ft.
Number of Airfoils	8 Airfoils				
Color Options	 Brushed Aluminum / White / Black / Red / Yellow / Blue				
Fan Weight	106 lbs.	124 lbs.	140 lbs.	218 lbs.	262 lbs.
Motor Enclosure	Totally Enclosed Fan-Cooled				
Motor Power	0.5 HP			1.5 HP	3.0 HP
Maximum RPM	44 RPM	44 RPM	44 RPM	49 RPM	62 RPM
Sound Level (dBA)**	<57 dBA	<57 dBA	<57 dBA	< 59 dBA	< 59 dBA
CFM	15899	48759	92298	233605	259438
Direct Breeze Region ***	28 - 32 ft. diameter	42 - 48 ft. diameter	56 - 64 ft. diameter	70 - 80 ft. diameter	90 - 100 ft. diameter
Electrical Frequency	60 Hz	60 Hz	60 Hz	55 Hz	50 Hz
Input Power*****	110-120V, 1φ: 13.0 A 208-240V, 1φ: 6.4 A 208-240V, 3φ: 3.7 A 460-480V, 3φ: 1.85 A			208-240V, 1φ: 12.3 A 208-240V, 3φ: 7.12 A 460-480V, 3φ: 3.50 A	208-240V, 3φ: 12.0 A 460-480V, 3φ: 6.0 A
Motor Maximum Full Load Amps	208-240V, 3φ: 1.90A 460-480V, 3φ: 0.95 A			208-240V, 3φ: 4.20A 460-480V, 3φ: 2.10A	208-240V, 3φ: 9.39A 460-480V, 3φ: 4.68A
Minimum Airfoil Clearances	Sides: 2 ft. Ceiling: 3-4 ft.	Sides: 2 ft. Ceiling: 3-4 ft.	Sides: 2 ft. Ceiling: 3-4 ft.	Sides: 2 ft. Ceiling 4-6 ft.	Sides: 2 ft. Ceiling 6-8 ft.
Standard Mount	I-Beam/Z-Purlins/Open Joist				
Extensions	1 ft., 2 ft., 3 ft., and 6 ft. Mounting Extensions Available				
Controller	NEMA 1 Wall Mounted VFD w/Safety Disconnect, On/Off Toggle and Speed Pot				
Safety Features	Safety Cable, Hub Clips, Hub Retainer, Dual-Method Fastening of all Joined Components, Integrated Sprinkler Shut-Off				
Warranty	5 Years All Parts				

\*\* dBA measurements taken directly beneath units running at 3/4 speed in an active work environment.

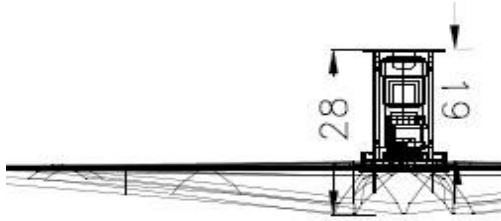
\*\*\* For applications in which breeze production/ventilation is the foremost consideration, applies to operation at 1/2 max speed with a clear floor.

\*\*\*\* For applications in which heating/cooling cost reduction is the foremost consideration

\*\*\*\*\* Regardless of whether the input voltage is 1φ or 3φ, the power to the fan motor will always be 3φ

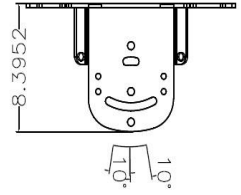
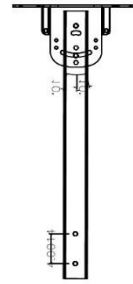
CFM is tested according to ANSI/AMCA Standard 230-15

### SHORT MOUNT – NO EXTENSION – 0.5 HP



### MOUNTING EXTENSION

1',2',3' and 6' Kits Standard, Modifications to Order



### LONG MOUNT -NO EXTENSION – 1.5 TO 3 HP

