

6-BLADE FANS

Technical Specifications					
Fan Diameter	10 ft.	12 ft.	16 ft.	20 ft.	
Number of Airfoils	6 Airfoils				
Color Options	Black Only				
Fan Weight	95 lbs	112 lbs	126 lbs	197 lbs	
Motor Enclosure	Totally Enclosed Fan-Cooled				
Motor Power	0.5 HP			1.5 HP	
Maximum RPM	44 RPM	44 RPM	44 RPM	49 RPM	
Sound Level (dBA)**	<57 dBA	<57 dBA	<57 dBA	< 59 dBA	
CFM	25488	36190	87461	197178	
Direct Breeze Region ***	38-42 ft diameter	42 - 48 ft. diameter	56 - 64 ft. diameter	70 - 80 ft. diameter	
Electrical Frequency	60 Hz	60 Hz	60 Hz	55 Hz	
Input Power*****	110-120V, 1φ: 9.6 A 208-240V, 1φ: 5.7 A 208-240V, 3φ: 3.9 A 460-480V, 3φ: 1.8 A			208-240V, 1φ: 14.3 A 208-240V, 3φ: 7.8 A 460-480V, 3φ: 4.4 A	
Motor Maximum Full Load Amps	208-240V, 3φ: 1.90 A 460-480V, 3φ: 0.95 A			208-240V, 3φ: 4.20 A 460-480V, 3φ: 2.10 A	
Minimum Airfoil Clearances	Sides: 2 ft. Ceiling: 3-4 ft.	Sides: 2 ft. Ceiling: 3-4 ft.	Sides: 2ft. Ceiling: 3-4 ft.	Sides: 2 ft. Ceiling 4-6 ft.	
Standard Mount	I-Beam/Z-Purlins/Open Joist				
Extensions	1 ft., 2 ft., 3 ft., and 6 ft. Mounting Extensions Available				
Controller	VFD				
Safety Features	Safety Cable, Hub Clips, Hub Retainer, Dual-Method Fastening of all Joined Components, Integrated Sprinkler Shut-Off				
Warranty	5 Years All Parts				

** dBA measurements taken directly beneath units running at 3/4 speed in an active work environment.

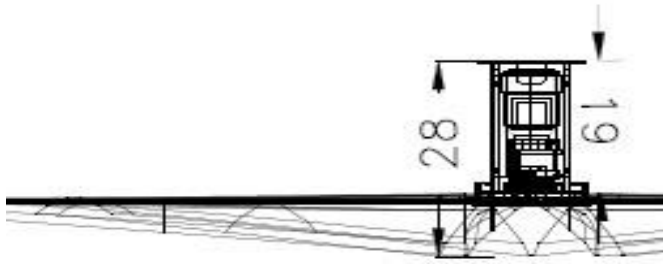
*** For applications in which breeze production/ventilation is the foremost consideration, applies to operation at 1/2 max speed with a clear floor.

**** For applications in which heating/cooling cost reduction is the foremost consideration

***** Regardless of whether the input voltage is 1φ or 3φ, the power to the fan motor will always be 3φ

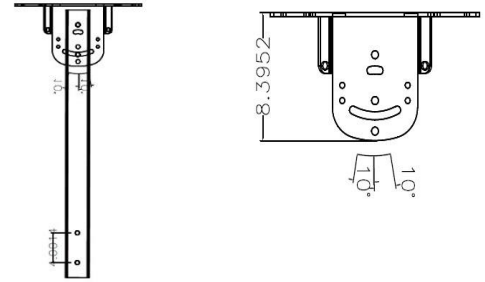
CFM is tested according to ANSI/AMCA Standard 230-15

SHORT MOUNT -NO EXTENSION – 0.5 HP



MOUNTING EXTENSION

1',2',3' Kits Standard, Modifications to Order



LONG MOUNT -NO EXTENSION – 1.5 TO 3 HP

